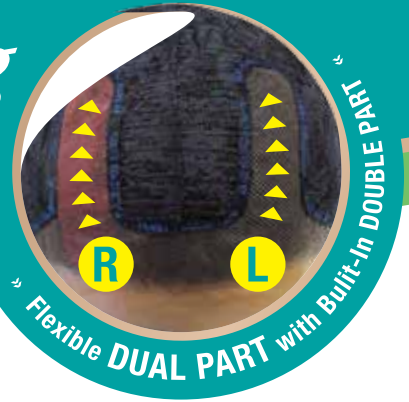


# DUAL PART™ Wig

Double Parted with **Lace!**  
Hand-Tied Lace



1. Natural looking hair that allows you to choose the direction of the part.
2. The dual color **DUAL PART** gives you **two color options** so you can interchanges as you like.
3. Top notch styling at an affordable price.
4. Trendy style & Dual color for an all-in-one package.

**2** STYLES in **ONE**



<< **NEVA** FUTURA FIBER

• Available Color:  
1, 1B, DPC1B/30, DPC1B/BURG, DPC1B/RED  
DPC8/27/240, DPC1B/144/613

**NEW ARRIVAL**



**LEFT PART**



**RIGHT PART**



**RIGHT PART**

**LEFT PART**



**RIGHT PART**

**LEFT PART**

**ISABELLA**  
FUTURA FIBER  
• Available Color:  
1, 1B, DPC1B/30, DPC1B/BURG, DPC1B/PURPLE  
DPC8/27/240, DPC4/27/30, DPC1B/FIRE RED

**EZOLA**  
FUTURA FIBER  
• Available Color:  
1, 1B, DPC1B/30, DPC1B/BURG, DPC1B/PURPLE  
DPC8/27/240, DPC4/27/30, DPC1B/FIRE RED



# NATURAL DEEP PART

## Lace Wig



PREMIUM SYNTHETIC FIBER



<< MAMA  
FUTURA FIBER

<< NANA

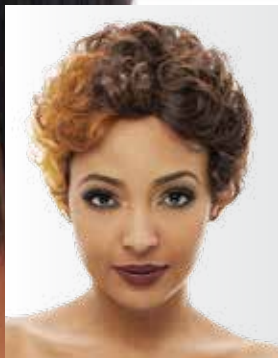
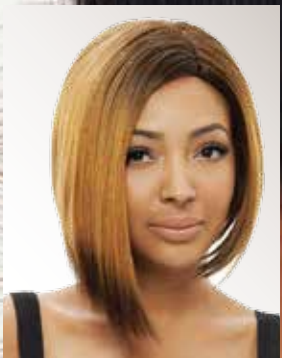
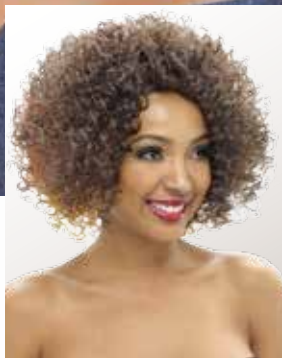
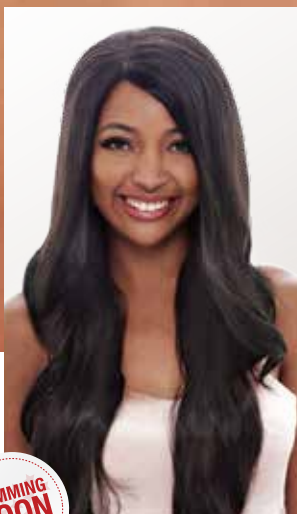
FUTURA FIBER

• Available Color:

1, 1B, 2, PFS1B/30, OEM1B/30/8, OEM4/30/27, OET1B/27/8, OET1B/BURG/99J, OET1B/RED



COMING SOON  
\*\*\*\*\*



COMING SOON  
\*\*\*\*\*

**MIA**  
FUTURA FIBER

1, 1B, 2, PFS1B/30, OEM1B/30/8, OEM4/30/27, OET1B/27/8, OET1B/BURG/99J, OET1B/RED

**TINA**  
FUTURA FIBER

1, 1B, 2, PFS1B/30, OEM4/30/27, OEM1B/30/8, OET1B/27/8, OET4/27/30, OET1B/BURG/99J, OET1B/RED

**KAREN**  
FUTURA FIBER

1, 1B, 2, PFS1B/30, OET1B/30, OET1B/BURG, OET1B/RED, OET4/613, WINE RED

**SCARLETT**  
FUTURA FIBER

1, 1B, 2, PFS1B/30, DAISY, OET1B/30, OET1B/BURG, OET1B/RED, OET4/613

**MAMA**  
FUTURA FIBER

1, 1B, 2, 99J, 613, PFS1B/30, PFS4/30, PFS27/613, OEM3801, OEM3912, OET1B/BURG, OET1B/RED, OET99J/BURG, OET4/613